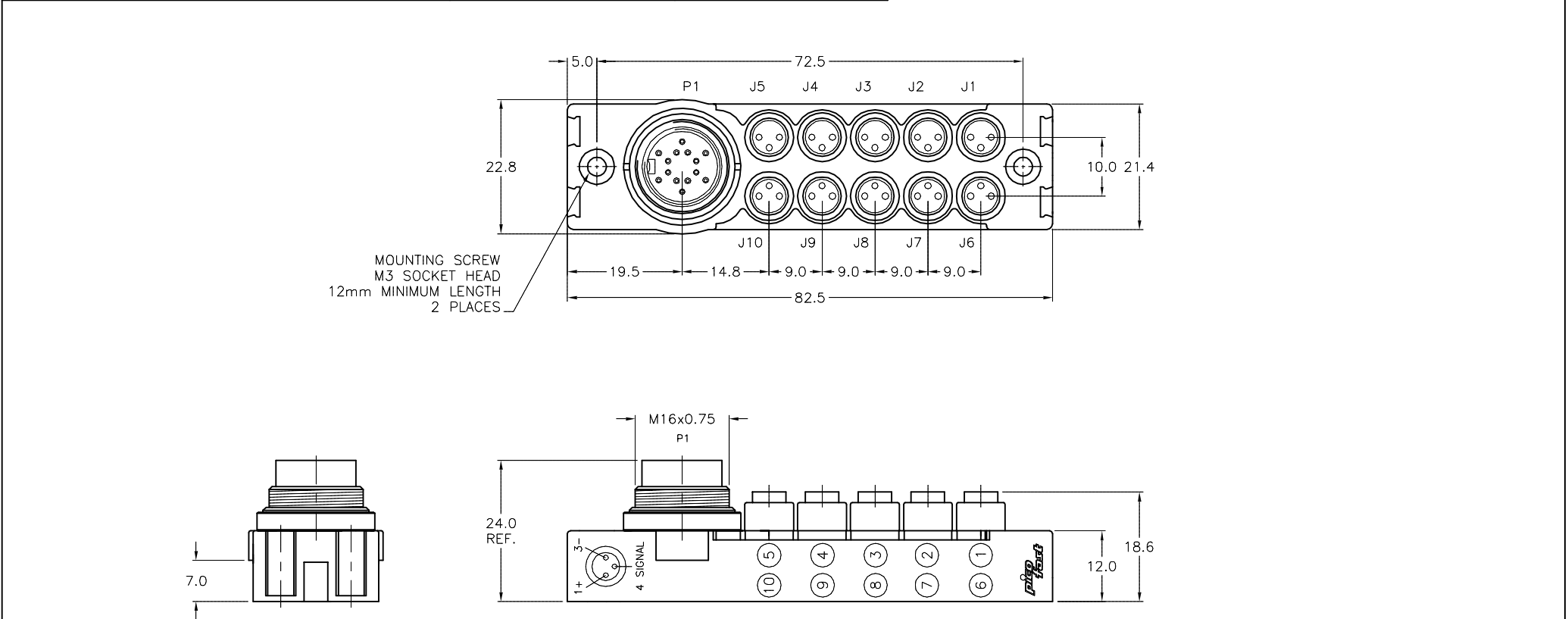
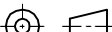


WIRING DIAGRAM	MALE END VIEW (P1)	FEMALE END VIEW (J1-J10)	SPECIFICATIONS	
			HOUSING MATERIAL/COLOR	NYLON/BLACK
			RECEPTACLE HOUSING	ALUMINUM (P1), POLYURETHANE (J1-J10)
			CONTACT CARRIER MATERIAL/COLOR	PETP (P1), POLYURETHANE (J1-J10) / CLEAR
			CONTACT MATERIAL/PLATING	BRASS/GOLD
			OPERATING VOLTAGE	10-30 V DC
			OPERATING CURRENT	3.0 A PER PORT, 3.0 A TOTAL
			LED CURRENT	10mA MAX AT 48VDC SUPPLY VOLTAGE (PER LED)
			PROTECTION CLASS to DIN 40050	IP 67 - ONLY WHEN ALL RECEPTACLES ARE COVERED WITH PLUGS OR CONNECTED
			OPERATING TEMPERATURE	-40°C to 85°C (-40°F to 185°F)



SOURCE DRAWING - FOR REFERENCE ONLY

<div>RELATED DOCUMENTS</div> <div>1.</div> <div>2.</div> <div>3.</div> <div>4.</div>					<div>3RD ANGLE PROJECTION</div>		<div>THIS DRAWING IS CONFIDENTIAL AND THE PROPERTY OF TURCK INC. USE OF THIS DOCUMENT WITHOUT WRITTEN PERMISSION IS PROHIBITED.</div>		<div>3000 CAMPUS DRIVE</div> <div>MINNEAPOLIS, MN 55441</div> <div>1-800-544-7769</div> <div>(763) 553-7300</div> <div>(763) 553-0708 fax</div> <div>turck.com</div>			
					<div></div>		DRFT JBJ		DATE 06/27/00		<div>DESCRIPTION</div> <div>VB 1003-PX10-BS14</div>	
							APVD		SCALE 1 = 1.0			
							<div>UNIT OF MEASUREMENT</div> <div>MILLIMETERS</div>		<div>IDENTIFICATION NO.</div> <div>U0943-55</div>			
<div>CONTACT TURCK FOR MORE INFORMATION</div>		DO NOT SCALE THIS DRAWING		FILE: PICO-B\U0943-55		SHEET 1 OF 1						
		<div>MATERIAL</div> <div>SEE SPECIFICATIONS</div>					<div>ALL DIMENSIONS DISPLAYED ON THIS DRAWING ARE FOR REFERENCE ONLY</div>		<div>DO NOT SCALE THIS DRAWING</div>		<div>DESCRIPTION</div> <div>VB 1003-PX10-BS14</div>	
<div>FINISH</div> <div>SEE SPECIFICATIONS</div>												
D	UPDATE VOLTAGE			NF	05/26/16	54959						
REV	DESCRIPTION			BY	DATE	ECO NO.						